

The Sports Car Of Motorhomes

CHINOOK

Quality Proven • A Division Of **TRAIL WAGONS** • Yakima, Washington



FEATURING
Concourse
&
Premier

MOTORHOMES

By **CHINOOK**

Floor Plans
& Specifications

1998 CONCOURSE/CONCOURSE SE SPECIFICATION LIST STANDARD FEATURES

FORD CHASSIS:

6.8 Liter Triton V-10 fuel injected engine
4 speed automatic transmission w/ overdrive
Power steering
4-wheel antilock brakes
Dual rear wheels
Tilt wheel/cruise control
Power windows
Power door locks
Heavy-duty 130 Amp alternator
In dash air conditioner
37 gallon fuel tank w/ locking filler door
Driver & Passenger side airbags
Engine block heater
4.10 limited slip rear axle
AM/FM cassette stereo
138" wheel base-provides excellent driving
Full frame chassis
Twin I beam front suspension system
3 year/36,000 mile bumper to bumper warranty
24 hour roadside assistance
Lt 225-75 R16 E rated all season radial tires

EXTERIOR BODY:

One-piece fiberglass body, fully reinforced
Arctic foam insulation
Double laminated fiberglass inner roof liner w/ foam insulation
Extra large, solar reflective, safety glass slider windows w/ screens
Swing down spare tire carrier w/ continental kit
Side & rear lockable outside storage compartments
Exterior base coat, clear coat, 2 color custom paint graphics
Entrance door w/ window, screen door, deadbolt lock
Chrome rear step bumper
Sewer hose storage compartment with 10' hose
Roof rack & ladder
Rear & side porch lights
Lighted dump valve
Insulated solid floor laminated to body
Limited lifetime warranty on Chinook fiberglass body
Exterior cable tv/telephone jack
Pre-wired for digital satellite system
Powder coated exterior brackets
Stainless steel wheel covers

HEATING, COOLING, POWER & WATER SYSTEMS:

5-Way systems monitoring panel
32 gal. fresh water tank
Pressurized city water hookup
19 gal. LPG frame mount tank (12-gal. on SE)
Pre-wired for roof air
2-Heavy duty deep cycle auxiliary battery system, 200/ amperes
of 12V power
Deluxe slide-out battery tray
6-gallon hot water heater
Exterior G.F.C.I. receptacle
Power "Fantastic" roof vent w/ thermostat
16,000 BTU furnace w/ auto-ignition
23 ft. service cord
Water pump
Dual holding tanks/35 gal gray/15 gal black
120V/12V power center, 45 AMP converter/charger
w/ automatic transfer switch
Auxiliary battery disconnect switch
Bidirectional charging system
Low voltage coach disconnect w/ audible alarm
Emergency start switch

BATHROOM:

Fiberglass shower wet bath
Medicine cabinet
Vanity sink with counters
Marine style china toilet
Power vent w/ light

Toilet paper holder
Towel rack
Water saver shower head
Shower curtain
Floor mat
2 Robe hooks on bath door

COMFORT & LIVABILITY:

Deluxe reclining driver & passenger captain chairs
Wall to wall carpet w/ rebound pad including driver compartment
Cab area privacy drape/rear door drape
Day/night fabric shades
Decorative valances w/ indirect lighting
Sofa sleeper w/ under bed storage
Deluxe oak cabinetry w/ raised panel doors
Overhead florescent lighting
Lighted interior cabinets

CONVENIENCE & SAFETY:

Lighted entrance grab handle
12V vacuum
Dead bolt lock
Fire extinguisher
Smoke detector
CO detector
LPG gas detector
Oak magazine rack
Mag light flash light
Coke opener
Towel racks with towel
Coat hooks - 3 DBL, 1 inside closet
Cedar clothes hangers
Molded fiberglass overhead console with switch cluster
Paper towel holder
Note pad holder
2 bottle wine rack w/ opener (Club Lounge only)
Night light

KITCHEN FEATURES:

3-way (110/12 V/LPG) double door 6' flush mount refrigerator
3 burner range w/ cover
2 burner on SE floor plan
Power range hood w/ light & fan
Double bowl stainless steel sink w/ covers
Single bowl on SE floor plan
Metal single handle faucet
Oak cutting board
Oak drawers with deluxe roller slides
Spice rack
Tipout sink storage

HEIGHTS WEIGHTS & DIMENSIONS:

Exterior length	21'
Exterior width	7'7"
Exterior height	9'3"
w/ roof air	9'11"
Gross vehicle wt.	10,700
Dry weight*	8,800
Wet weight*	9,500
Gross comb. wt.	
veh. & trlr. comb.	18,700
Wheel base	138"
Bed dimensions	
Sofa sleeper	72" x 50"
Dinette	70" x 36"
Sleeper/dinette combo	72" x 84"
Twin beds	72" x 32"
SE rear bed	75" x 47"
SE dinette/twin	70" x 32"

*Weights listed are approximate and may vary by floor plan and equipment. Listed values include: XL pkg, Roof air & generator.

CHINOOK
Concourse

1998 PREMIER SPECIFICATION LIST STANDARD FEATURES

FORD CHASSIS:

6.8 Liter Triton V-10 fuel injected engine
4 speed automatic transmission w/ overdrive
Power steering
4-wheel antilock brakes
Dual rear wheels
Power windows
Power door locks
Tilt wheel/cruise control
Heavy-duty 130 Amp alternator
In dash air conditioner
37 gallon fuel tank w/ locking filler door
Driver & Passenger side airbags
Engine block heater
4.10 limited slip rear axle
AM/FM cassette stereo
138" wheel base-provides excellent driving
Full frame chassis
Twin I beam front suspension system
3 year/36,000 mile bumper to bumper warranty
24 hour roadside assistance
Lt 225-75 R16
E rated all season radial tires

EXTERIOR BODY:

One-piece fiberglass body, fully reinforced
Arctic foam insulation
Double laminated fiberglass inner roof liner w/ foam insulation
Large, tinted, slider windows w/ screens
Swing down spare tire carrier w/ continental kit
Side & rear lockable outside storage compartments
Exterior graphic accents
Entrance door w/ window, screen door deadbolt lock
Rear step bumper powder coated
Sewer hose storage compartment
Roof rack & ladder
Insulated solid floor laminated to body
Limited lifetime warranty on Chinook fiberglass body
Exterior cable tv jack
Powder coated exterior brackets
Stainless steel wheel covers
Aluminum running boards

HEATING, COOLING, POWER & WATER SYSTEMS:

5-Way systems monitoring panel
32 gal. fresh water tank
Pressurized city water hookup
19 gal. LPG frame mount tank
Pre-wired for roof air
2-Heavy duty deep cycle auxiliary battery system 200/ amperes of 12V power
6-gallon hot water heater
Exterior G.F.C.I. receptacle
Power roof vent
12,000 BTU furnace w/ auto-ignition
23 ft. service cord
Water pump
Dual holding tanks/35 gal gray/15 gal black
120V/12V power center, 45 AMP converter/charger w/ automatic transfer switch
Auxiliary battery disconnect switch
Bidirectional charging system
Low voltage disconnect w/ audible alarm
Emergency start switch

BATHROOM:

Fiberglass shower wet bath
Medicine cabinet
Vanity sink with counter
Marine style toilet
Toilet paper holder
Power vent w/ light

Towel rack
Water saver shower head
Shower curtain
Floor mat
2 robe hooks on bath door

COMFORT & LIVABILITY:

Deluxe reclining driver & passenger captain chairs
Wall to wall carpet w/ rebond pad including driver compartment
Cab area privacy drape/rear door drape
Day/night fabric shades
Sofa sleeper w/ under bed storage
Deluxe oak framed cabinetry
Overhead lighting

CONVENIENCE & SAFETY:

Entrance grab handle
Dead bolt lock
Fire extinguisher
Smoke detector
CO detector
LPG gas detector
Oak magazine rack
Mag light flash light
Coke opener
Towel racks w/ towel
Coat hooks - 3 DBL, 1 inside closet
Cedar clothes hangers
Molded fiberglass overhead console with switch cluster
Paper towel holder
Note pad holder
Night light

KITCHEN FEATURES:

3-way (110/12 V/LPG) double door 4.5' flush mount refrigerator
2 burner range
Power range hood w/ light & fan
Double bowl stainless steel sink w/ cover
Double handle faucet
Pull out drawers
Tipout sink panel

HEIGHTS WEIGHTS & DIMENSIONS:

Exterior length	21'
Exterior width	7'7"
Exterior height	9'3"
w/roof air	9'11"
Gross vehicle wt.	10,500
Dry weight*	8,400
Wet weight*	9,100
Gross comb. wt.	
veh. & trlr. comb.	18,500
Wheel base	138"
Bed dimensions	
Sofa sleeper	72" x 50"
Dinette	70" x 36"
Sleeper/dinette combo	72" x 84"
Twin beds	72" x 32"

*Weights listed are approximate and may vary by floor plan and equipment. Listed values include: LT options group, Roof air & generator.

CHINOOK
Premier

Concourse Floor Plans & Specifications.

XL PACKAGE

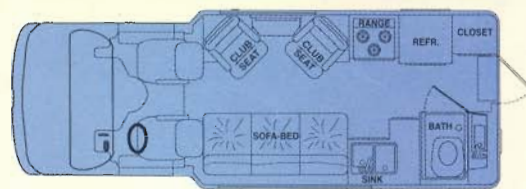
13" color TV w/ remote
Video cassette player w/ remote
Rear AM/FM compact disc stereo w/ speakers
Microwave oven
Corian® counter tops w/ back splash guards
12V vacuum
Fiberglass running boards w/ flares
Stainless steel wheel liners
Pro-flap mud flaps
Solar panel charger w/ monitor panel
Trailer hitch
Front bumper step
Remote heated deluxe side mirrors
High-gloss wood grain dash decor package
Fresh H₂O filter
Outside shower
Six way power driver seat base
Front driving lights
Adjustable amplified TV antenna
with power booster
Black tank flush kit

AVAILABLE OPTIONS

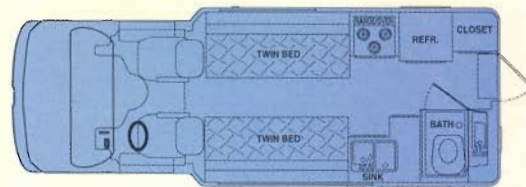
- LEATHER UPGRADE FRONT CAPTAIN'S CHAIRS
- QUADRA VERSION 4-WHEEL DRIVE
- THREE BURNER RANGE WITH OVEN
- COFFEE MAKER
- MICROWAVE CONVECTION OVEN
- LUGGAGE POD
- DIGITAL SATELLITE SYSTEM
- NU-HEAT HEATED FLOOR
- WALL MOUNT TELEPHONE
- MASTERMOUNT OUTSIDE TABLE/BIKE RACK SYSTEM
- AWNING WITH CRANK
- HAND HELD CB RADIO
- 4.0 GENERATOR WITH REMOTE START SWITCHES AND HOUR METER
- 13,500 BTU ROOF AIR WITH HEAT STRIP AND CLIMATE CONTROL CENTER
- POWER STROKE TURBO DIESEL
- REAR CAMERA WITH VISOR MOUNT LCD DISPLAY SCREEN
- RETAIL CUSTOMER FACTORY DELIVERY

LUXURY PACKAGE

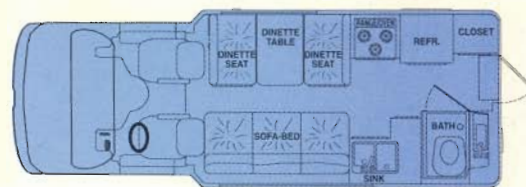
Deluxe digital rear view mirror with
outside temperature, compass readout
Beverage Mate - hot & cold cup holders
Hidden safe



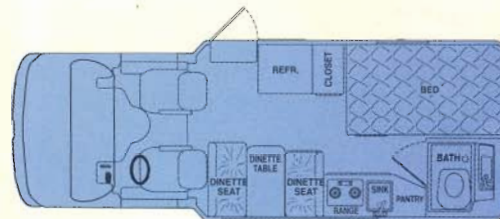
CLUB LOUNGE



TWIN BED



DINETTE



SIDE ENTRY

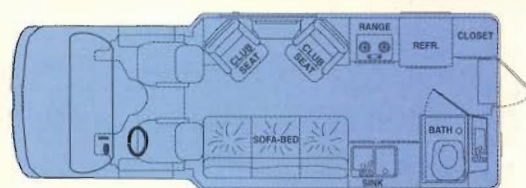
Premier Floor Plans & Specifications.

LT OPTION GROUP:

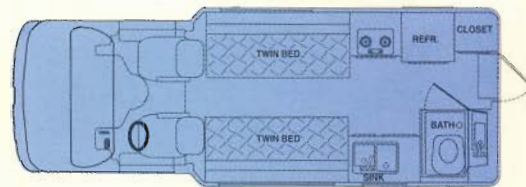
MICROWAVE OVEN, 13" COLOR TV W/ REMOTE, AMPLIFIED TV ANTENNA, VIDEO CASSETTE PLAYER, CABLE TV HOOK UP, DELUXE SIDE MIRRORS, RECEIVER HITCH, DELUXE HIGH GLOSS OAK DASH DECOR PACKAGE, POWER DRIVER'S SEAT BASE.

AVAILABLE OPTIONS

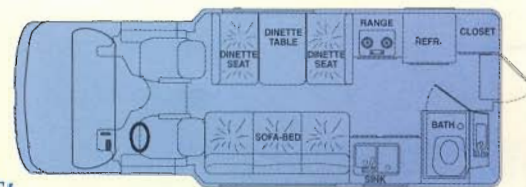
- THREE BURNER WITH OVEN
- FANTASTIC FAN UPGRADE
- MICROWAVE CONVECTION OVEN
- STAINLESS STEEL WHEEL LINERS
- APPROVED ENGINEERING CHANGE
- RETAIL CUSTOMER FACTORY DELIVERY
- AWNING W/ CRANK
- 13,500 BTU ROOF AIR WITH HEAT STRIP
- 4.0 GENERATOR W/ REMOTE START
- LUGGAGE POD
- SOLAR PANEL CHARGER, 43 WATT
- SLIDE-OUT BATTERY TRAY
- UPGRADE DELUXE POWER MIRRORS
- CD PLAYER
- LEATHER SEATING



CLUB LOUNGE



TWIN BED



DINETTE

CHINOOK RV IS CONTINUALLY STRIVING TO IMPROVE!

***All specifications and equipment are subject to change without prior notice. Weights and capacities are approximate, and may vary by floor plan and optional equipment. ***

THE MAJOR DIFFERENCE BETWEEN:

THE 1998 CONCOURSE XL COMPARED TO THE 1998 PREMIER LT

- SOLID OAK RAISED PANEL DOOR CABINETRY
- CORIAN® COUNTER TOPS
- DOUBLE DOOR 6' REFRIGERATOR
- EXTRA LARGE SOLAR PANEL
- BASE COAT, CLEAR COAT, TWO COLOR PAINT GRAPHICS
- THREE BURNER COOK TOP
- COMPACT DISC AM/FM STEREO IN REAR
- HEATED & REMOTE POWER MIRRORS
- FANTASTIC FAN WITH THERMOSTAT CONTROLS
- LIGHTED OVERHEAD CABINETS AND WARDROBE
- CHINA TOILET
- FIBERGLASS RUNNING BOARDS
- STAINLESS WHEEL LINERS
- DELUXE PULL OUT BATTERY TRAY
- FRONT BUMPER STEP
- CUTTING BOARD
- LARGE SOLAR-RAY WINDOWS
- VALANCES WITH INDIRECT LIGHTING
- OUTSIDE SHOWER
- OUTSIDE PATIO LIGHT
- LIGHTED DUMP VALVE AREA
- PHONE JACK
- SINGLE HANDLE METAL SINK FAUCETS
- LIGHTED GRAB HANDLE
- LARGE SPICE RACK CANISTER CABINET
- DSS SYSTEM PRE WIRE
- CHROME REAR STEP BUMPER
- INTERIOR FLOURESCENT LIGHTING
- DRIVING LIGHTS
- 16 K FURNACE
- 12V VACUUM
- 2 SINK COVERS
- 10' SEWER HOSE